

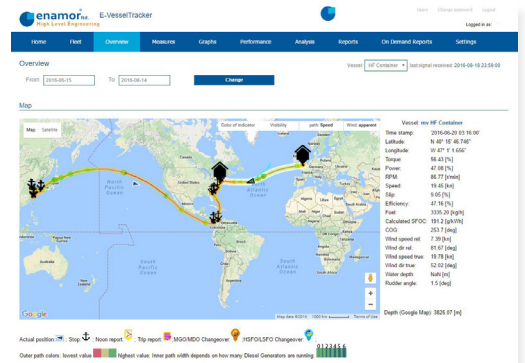
E-VESSEL TRACKER - ONLINE APPLICATION (EVT)

THE BEST WAY TO SUPPORT SHIP-OWNERS IN MANAGING THE ENERGY EFFICIENCY OF THEIR VESSEL AND THE IMPLEMENTATION OF SEEMP AND MRV REQUIREMENTS



FEATURES OF EVT

- Powerful, supervisory fleet tracker online tool.
- Showing data from ESOS system database, transferred to onshore server.
- Multilevel, 24/7 online access from PC computer, smartphone or tablet.
- Clear visibility of ship's route on the map.
- Ship's KPIs presented on map, time graph and layouts.
- Emission Control Areas (ECA) presented on map with changeover indication.
- Custom/EEOI/MRV reports, ready to preview or download in PDF file format.
- Detailed presentation of ship measurements in correspondence to the chosen time range.
- Automated presentation of key characteristics on graphs and comparisons.
- Unique On Demand Report (ODR) feature to prepare summary of KPIs and measures in correspondence to the chosen time range.
- Possibility to compare details of several vessels at one dashboard.
- Comparison of user defined fleets by just a click (CO₂ emission, total ME fuel, SFOC etc.).



SYSTEM DESCRIPTION

Vessel Tracker Online application (EVT) is responsible for monitoring, visualization, analyzing and presenting any selected voyage period according to data received from ESOS systems. EVT extends the functionality of SEEMP Set system and its components.

Map view provides comprehensive evaluation of vessel operations:

- ship route,
- crossing Emission Control Areas (ECAs),
- fuel changeover,
- anchorage,
- port entry,
- color code for chosen parameters (speed, ME Power, DG Power),
- number of A/E in operation,
- KPIs values (EEOI, FPI, EPI).

Ship Performance module provides assessment of ship performance in time and speed/power or rpm/power layouts. Performance analyses are based on steady state operation and includes correction of environmental impact (wind, wave, shallow water, temperature).

Trip Simulator tool allows to view result of average speed change for a given trip. User can simulate fuel consumption and ETA differences, e.g. calculate how much less fuel the vessel would consume and how much longer the trip would last. Analysis are based on fuel consumption characteristic defined by operation period time range selected by a user.

EVT TECHNICAL PARAMETERS:

Access device PC computer, tablet or smartphone with web browser and internet connection

Datafile 100~300 kB per 12h depending on connected systems

Transfer of datafile existing ship's email mailbox

E-VESSEL TRACKER - ONLINE APPLICATION (EVT)

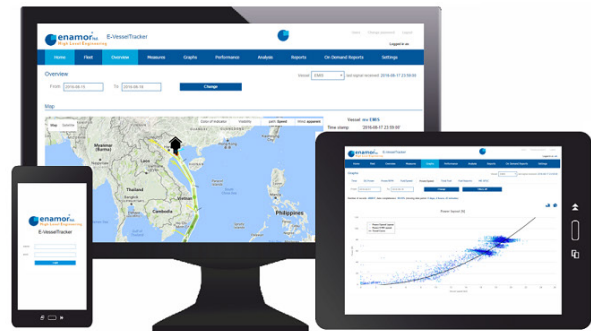
THE BEST WAY TO SUPPORT SHIP-OWNERS IN MANAGING THE ENERGY EFFICIENCY OF THEIR VESSEL AND THE IMPLEMENTATION OF SEEMP AND MRV REQUIREMENTS



ESOS SHORE DATABASE



FLEET WITH ESOS ONBOARD



EVT. ONLINE APPLICATION E-VESSELTRACKER.COM

Additional Information

EVT is a multifunctional online tool, where ship-owner or charterer is able to improve the fleet efficiency. The values are presented in user friendly interface on the map or graph presentation. Ship route, measures, KPIs and reports are available by Internet, 24 hour per day, 7 days per week for logged-in users.

EVT can be integrated in SEEMP-Set for the purpose of ship overall performance optimisation.

Make your fleet under control with EVT!

